

BYD

BYD SEALION 5

# UNPLUG YOUR POTENTIAL



**JKCG**  
AUTO  
A JOHN KEELLS GROUP COMPANY



\\ Ocean Aesthetics' Design Concept

---

\\ NFC Keyless Entry Using A Card

---

\\ One-Touch Open/ Close Tailgate

---

\\ Exterior Mirror Footlights

---





\\ 12.8 Inch Touch Screen

---

\\ 8.8 Inch Digital Instrument Cluster

---

\\ Heated and Ventilated Driver Seats

---

\\ 360° View Camera

---





\\ Light and Airy Panoramic Roof

\\ Large Storage Capacity

\\ Large Rear Passenger Space

\\ 7 Air Bags

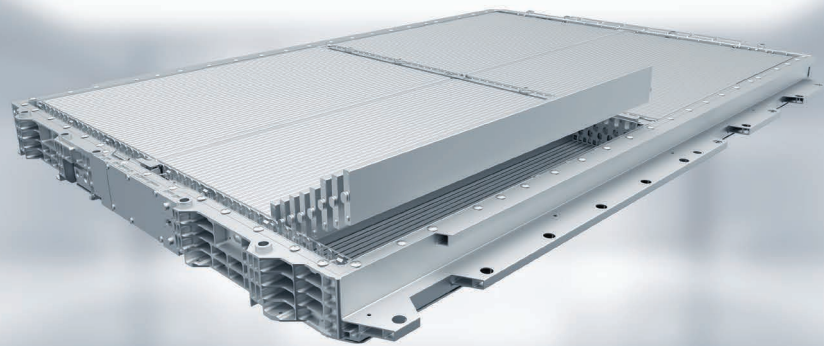


BYD Blade Battery

Xiaoyun Plug-in Hybrid 1.5 Liter  
High-efficiency Engine

Vehicle to Load Adaptor (V2L)

Intelligent Power Brake System



Variant	Standard Range	Extended Range
	Dynamic	Premium

**Dimensions**

Overall Length (mm)	4,738	
Overall Width (mm)	1,860	
Overall Height (mm)	1,710	
Wheel Track- Front/ Rear (mm)	1,565/1,565	
Wheelbase (mm)	2,712	
Minimum Turning Radius (m)	6	
Ground Clearance Unladen (mm)	170	
Ground Clearance Laden (mm)	150	
Luggage Capacity- Min (L)	463	
Luggage Capacity- Max (L)	1,410	
Kerb Weight (kg)	1,760	1,785
Gross Vehicle Mass (kg)	2,170	2,195
*Maximum Towing Weight (kg)	750	

**Powertrain**

Motor Type	Permanent Magnet Synchronous Motor	
Drivetrain	Front Wheel Drive	
Maximum Power (kW)	145	
Maximum Torque (Nm)	300	
Engine Type	Xiaoyun Plug-in Hybrid 1.5 Litre High-efficiency Engine	
Engine Model	Plug-In Hybrid	
Engine Maximum Power (kW)	72	
Engine Maximum Torque (Nm)	122	
Fuel Tank Volume (L)	52	

**Performance**

Acceleration 0-100km/h (s)	7.7	8.1
Electric Range: NEDC (km)	71	100
Seating Capacity	5	
Battery Type	BYD Blade Battery	
Battery Capacity (kWh)	12.9	18.3
Fuel Consumption Combined (L/100km) - Fully Charged	1.2	1.3
Fuel Consumption Combined (L/100km)	4.5	4.6

**Chassis**

Front Suspension	Macpherson Strut	
Rear Suspension	Multi-link	
Front Brake	Ventilated Disc	
Rear Brake	Disc	
Wheel Type	Alloy	
Tyre Size	225/60 R18	225/60 R18

**Comfort & Convenience**

Wireless Phone Charger (15W)	-	•
12V Socket	•	•
Keyless Entry and Keyless Start	•	•
Portable NFC Card	•	•
Automatic Dual-zone Air Conditioner	•	•
PM2.5 Air Filter (Without Display Value)	•	•
Rear Central Air Vents	•	•

**Exterior**

Panoramic Sunroof	•	•
One-touch Open/ Close Tailgate	•	•
Roof Rails	•	•
Rear Wiper	•	•
Electrically Heated and Adjustable Exterior Mirrors	•	•
Electrically Retractable Exterior Mirrors	•	•
Exterior Mirror Footlights	•	•
Auto-dimming Interior Mirror	-	•
Auto-windows with Anti-trap- 4 Doors	•	•
Rear Windscreen with Electric Heating and Defrosting	•	•

Variant	Standard Range	Extended Range
	Dynamic	Premium

**Safety and Security**

Front Airbags - Driver & Front Passenger	•	•
Side Airbags - Driver & Front Passenger	•	•
Side Curtain Airbags - Front & Rear	•	•
Far-side Airbags- Driver	•	•
Front Pre-tensioning and Force-limiting Seat Belt	•	•
Rear Pre-tensioning and Force-limiting Seat Belt	•	•
Seat Belt Reminder - Front & Rear	•	•
Tyre Pressure Monitoring System (TPMS)	•	•
I-Size Child Restraint Anchorage Points	•	•
360° View Camera	•	•
Front 2 Radars	•	•
Rear 4 Radars	•	•
Anti-lock Braking System (ABS)	•	•
Electric Parking Brake System (EPB)	•	•
Electronic Stability Control (ESC)	•	•
Traction Control System (TCS)	•	•
Electronic Brake Force Distribution (EBD)	•	•
Hill Hold Control (HHC)	•	•
Auto Hold	•	•
Adaptive Cruise Control (ACC)	•	•
Lane Keeping Control (LKC)	•	•
Intelligent High Beam Control (IHBC)	•	•
Emergency Lane Keeping Assist (ELKA)	•	•
Lane Departure Assist (LDA)	•	•
Traffic Sign Recognition (TSR)	•	•
Intelligent Speed Alert (ISA)	•	•
Intelligent Speed Limit Control (ISLC)	•	•
Automatic Emergency Braking System (AEB)	•	•
Front Collision Warning (FCW)	•	•
Rear Cross Traffic Alert/Brake	•	•
Rear Collision Warning (RCW)	•	•
Door Open Warning (DOW)	•	•
Blind Spot Detection (BSD)	•	•
Lane Change Warning (LCW)	•	•

**New Energy**

Portable Charging Cable (Mode 2)	•	•
AC Charging Port- Type 2 (3.3kW)	•	•
V2L Function	•	•
V2L Discharge Adapter	•	•
Regenerative Braking	•	•

**Interior**

Steering Wheel Mounted Controls- Audio, Phone, ACC and Multi-function Display	•	•
Electric Power Assisted Steering System	•	•
8.8" Digital Instrument Panel	•	•
Synthetic Leather Seats	•	•
60/40 Split Fold Rear Seats	•	•
6-way Power Adjustment- Driver Seat	•	•
4-way Power Adjustment- Front Passenger Seat	•	•
Driver Heated and Ventilated Seat	•	•
Rear Row Central Armrest (With Dual Cup Holders)	•	•
Front Sunvisor with Vanity Mirror and Light	•	•

Variant	Standard Range	Extended Range
	Dynamic	Premium

**Entertainment**

	Standard Range	Extended Range
AM/ FM Radio	•	•
*Bluetooth Phone Connectivity and Audio Streaming	•	•
*Apple CarPlay® and Android Auto™ (wireless)	•	•
12.8" Intelligent Touch Screen	•	•
6 Speakers	•	-
HD Sound, 9 Speakers	-	•
Voice Assistant- English	•	•
USB - C port × 1 & USB - A port × 1, Front	•	•
USB - C port × 1 & USB - A port ×1, Rear	•	•

**Dimensions**



**Interior Option**



**Black**

**Multiple Body Appearance Options**



**Cosmos Black**



**Atlantis Grey**



**Aurora White**



**Harbour Grey**

Variant	Standard Range	Extended Range
	Dynamic	Premium

**Light**




	Standard Range	Extended Range
LED Headlight	•	•
Follow Me Home Headlight	•	•
LED Daytime Running Light	•	•
LED Rear Light	•	•
LED High Mount Brake Light	•	•
LED Front Reading Light	•	•
LED Rear Side Reading Light	•	•
Luggage Compartment Light	•	•

**Disclaimer of BYD SEALION 5**

- The product & feature images and illustrations shown in the brochure is for the purpose of representation only.
- Specifications and features shown in the brochure may not be of standard fitment and may vary from the products supplied.
- The driving range: NEDC (km) is as per the test report issued by IDIADA as per the test of New European Driving Cycle as per ECE R101. The real range is influenced by many factors such as individual driving style, speed, outdoor temperature, load condition, traffic condition, etc.
- Bluetooth® is a registered trademark of Bluetooth SIG, Inc. Compatibility and functionality varies depending on device.
- Apple CarPlay is a registered trademark of Apple Inc. Requires compatible device, USB connection. Android Auto™ is a registered trademark of Google Inc. Requires compatible device, and wireless Android Auto™ is compatible with an active data plan, 5 GHz Wi-Fi support, and the latest version.
- Colours depicted are a guide only and may vary from actual colours due to the printing. The colours shown in the brochure are subject to availability.
- BYD advanced drive assistant system is not a substitute for human eye and driver vigilance. It is a driver assist system that enhances driving experience and safety. The driver shall remain responsible for safe, vigilant and attentive driving. See owner's manuals for complete details.
- Battery standard: UN38.3 and ECE R100.
- All vehicle information provided in this brochure are for reference only, actual product version is subject to change. BYD reserves the right to vary vehicle specifications and standard features from those detailed in this brochure. For the latest information on features, specifications, and other details, please contact the authorized BYD dealer in Sri Lanka before placing an order.
- The picture and specification of OBU (BYD Intelligent Cockpit System) functions displayed herein are for reference only, the actual functions and apps available are subject to changes of the respective market. Please note some apps of third-party licenses, such as built-in navigation and built-in streaming music are currently not accessible in Sri Lanka; and some features are currently only available over Wi-Fi or mobile hotspot that data rates may apply subject to your mobile carrier.



For more information follow

**bydsrilanka**   

**BYD Colombo**

**BYD Altair**

**BYD Moratuwa**

**BYD Kurunegala**

**BYD Kandy**

**BYD Galle**

**BYD Ampara**

**BYD Ratnapura**

**BYD Jaffna**



**JKCG**  
— AUTO —  
A JOHN KEELLS GROUP COMPANY

**John Keells CG Auto (Pvt) Ltd**  
Official distributor of BYD Passenger vehicles in Sri Lanka.  
Website : [www.johnkeellscgauto.com](http://www.johnkeellscgauto.com)  
Tel no: 0112 125 125